

Frequently Asked Questions

FLoSC

Forecasting Length of Stay and Cost

*Health and Social Care Modelling Group
University of Westminster, London*

Outline

- ◆ Software Problems
- ◆ Problems related to data preparation
- ◆ Possible applications/ extensions

Software Problems ...

- ◆ FLoSC opens as a read file
- ◆ Problems with macros
- ◆ FLoSC does not appear in the list of programs

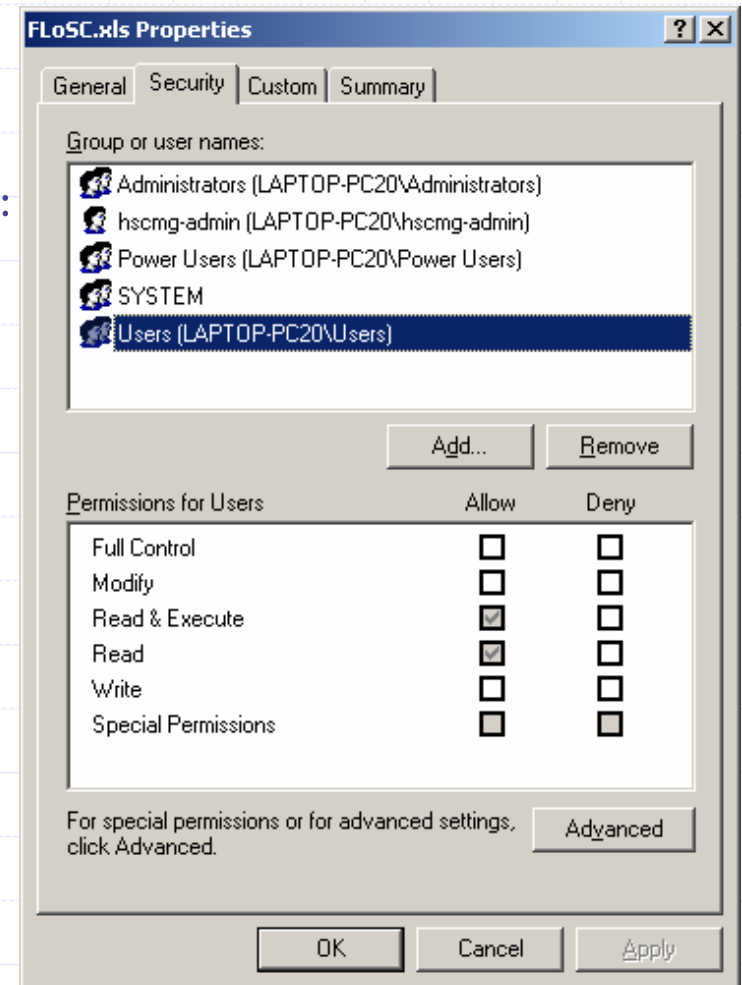
... Software Problems ...

◆ FLoSC opens as a read file

→ Computer account with administrator's right:
Steps to be followed

- Select "FLoSC" in "Program Files"
- Select "FLoSC.xls" and then "Properties"
- And modify the permissions for users

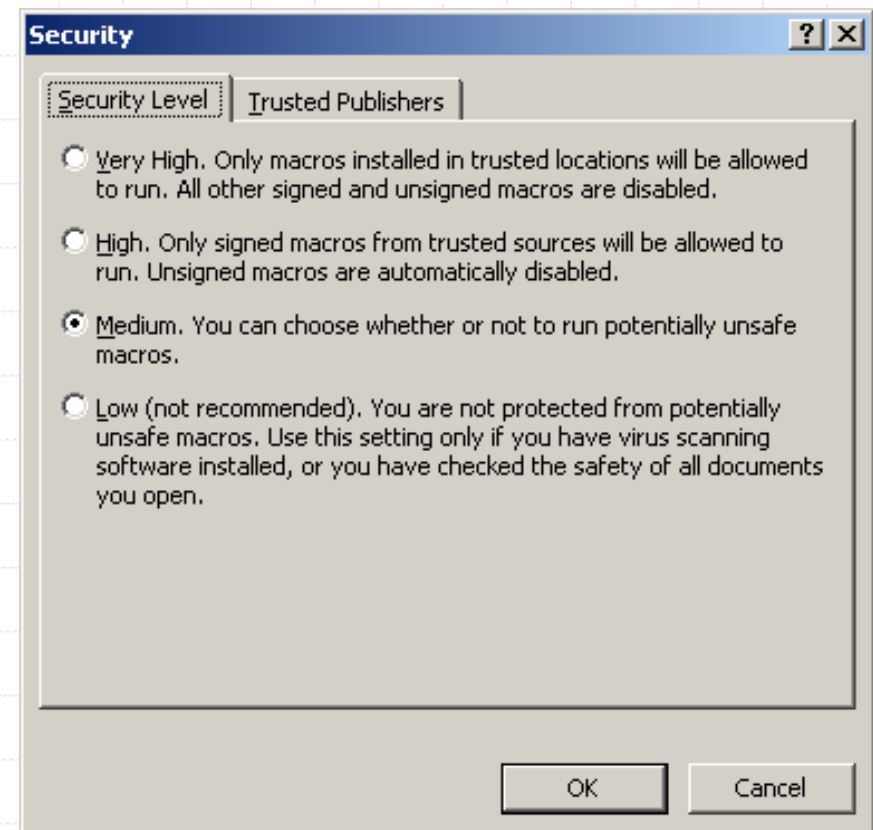
→ Computer account without administrator's right: Special permissions are required



... Software Problems ...

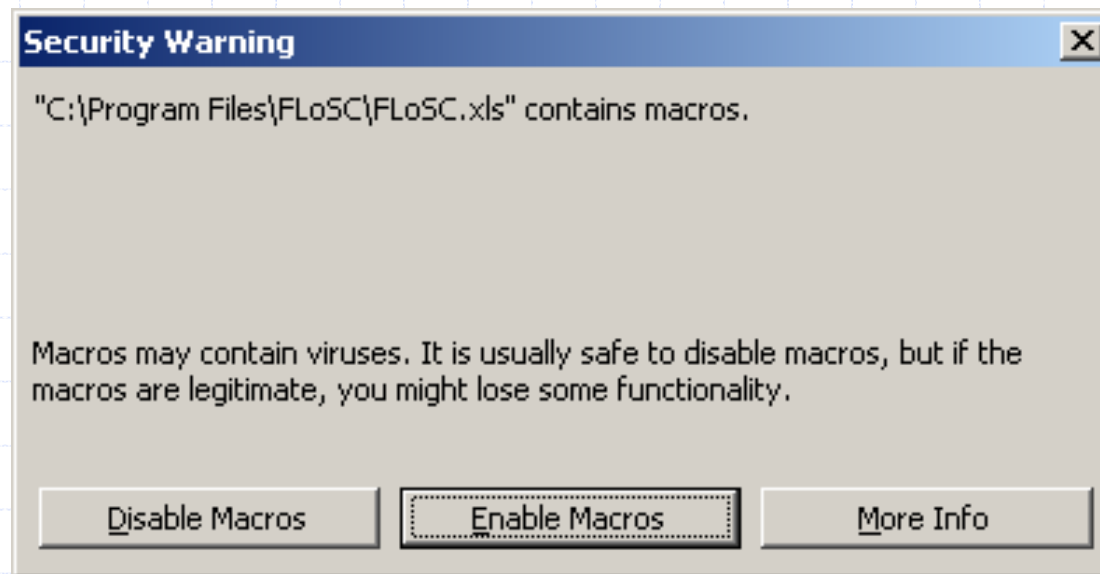
◆ Problems with macros

- On the “Tools” menu, point to “Macro”, and then click “Security”.
- On the “Security level” tab, if the macro security level in Excel is set to:
 - “Low” : Macros can run without prompting
 - “Medium”: recommended.
 - “High”: change the security level (“Medium”) and start FLoSC again from the “Start” menu



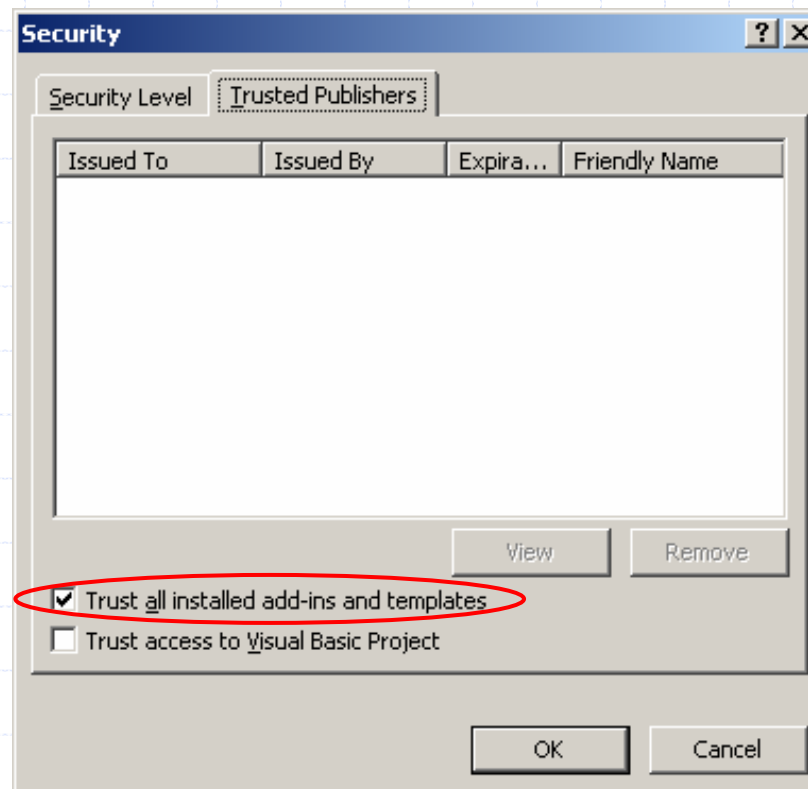
... Software Problems ...

- ◆ Problems with macros
 - On the “Tools” menu, point to “Macro”, and then click “Security”.
 - On the “Security level” tab, if the macro security level in Excel is set to:
 - “Medium”: Excel displays a dialog box asking if you want to enable macros.



... Software Problems ...

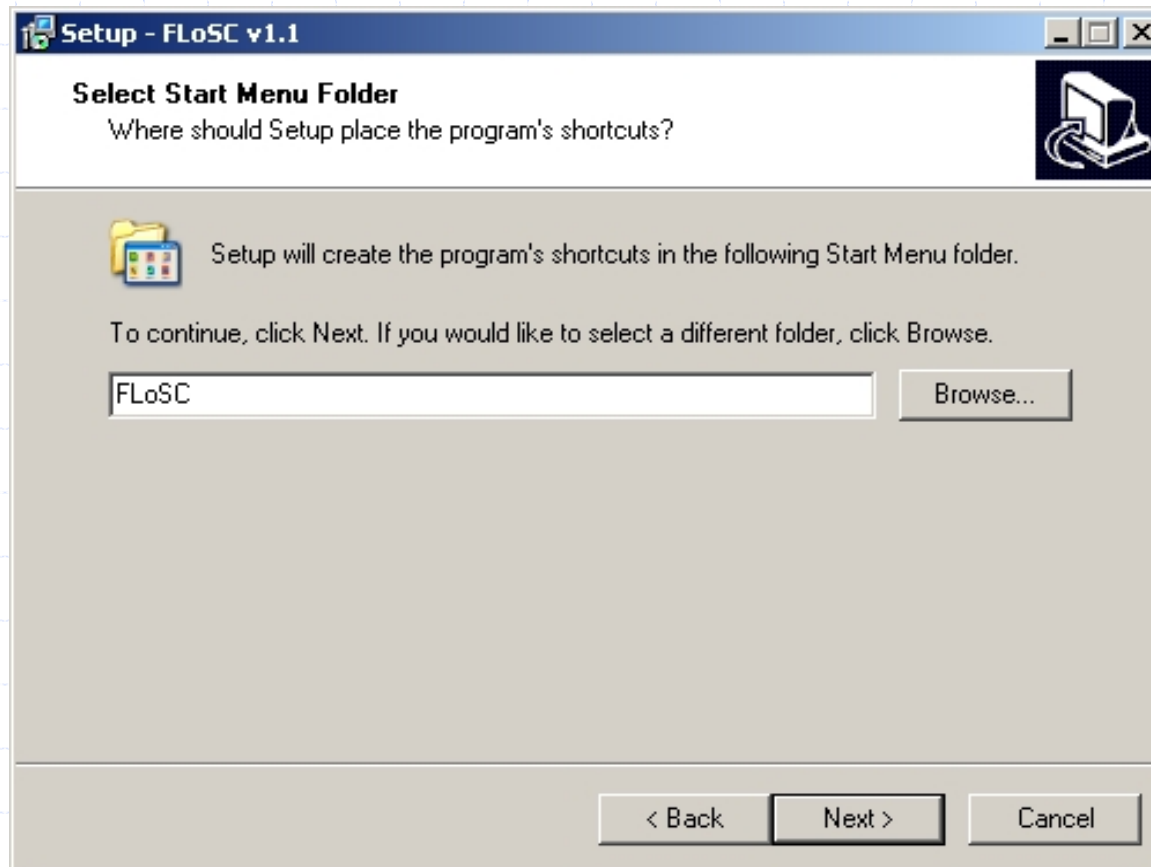
- ◆ Problems with macros
 - On the “Tools” menu, point to “Macro”, and then click “Security”.
 - On the “Trusted Publishers” tab, select the “Trust all installed add-ins and templates” check box.



... Software Problems

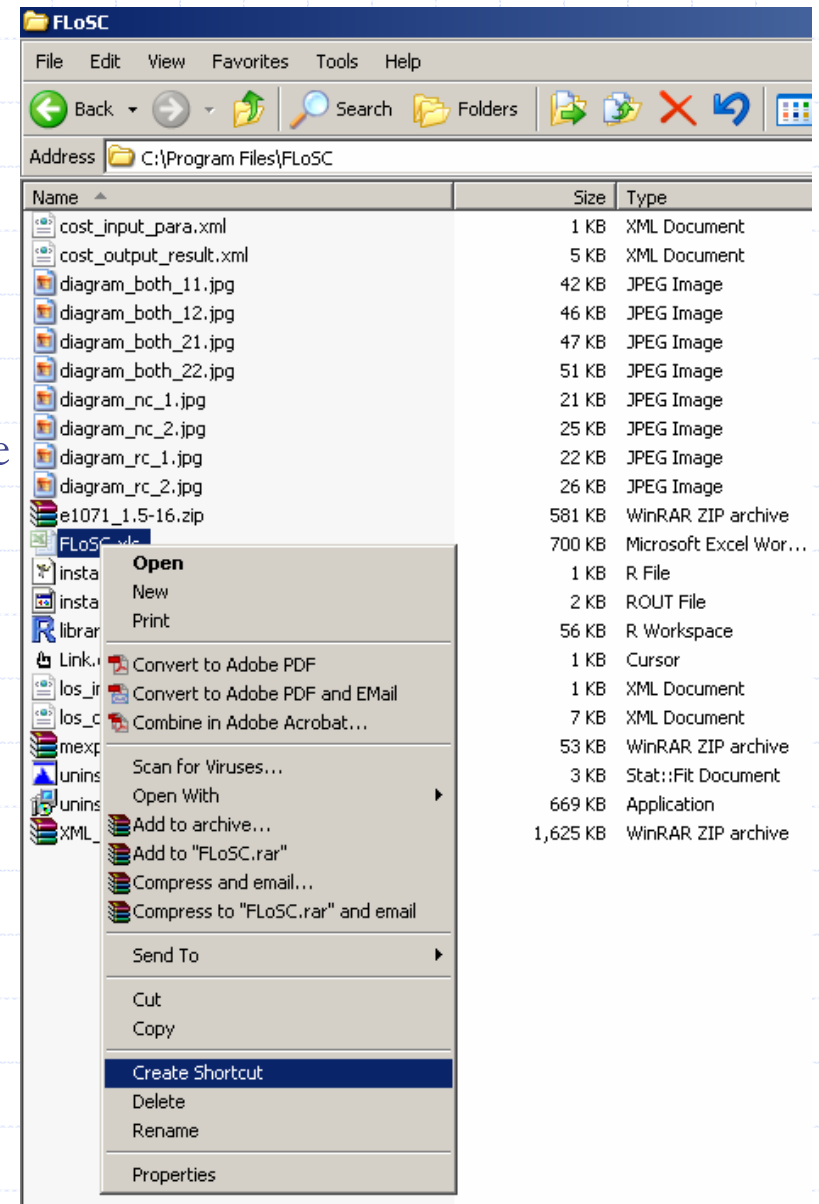
- ◆ FLoSC does not appear in the list of programs

→ During the installation process, a program's shortcut is created in the "Start menu"



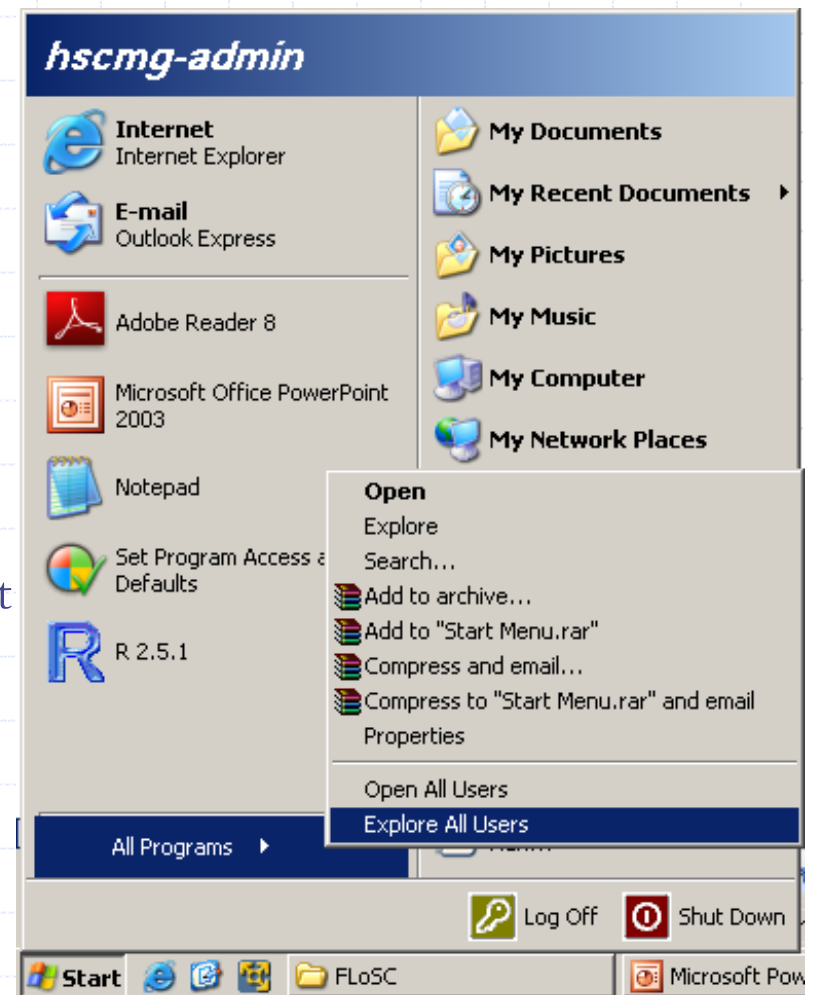
... Software Problems

- ◆ FLoSC does not appear in the list of programs
- On the “Program files” folder, select “FLoSC” and then “FLoSC.xls”.
- Right-click the program and click “Create shortcut”



... Software Problems

- ◆ FLoSC does not appear in the list of programs
- On the “Program files” folder, select “FLoSC” and then “FLoSC.xls”.
- Right-click the program and click “Create shortcut”
- Point to “Start”, and then “Programs”.
- Right-click and select “Explore all users”, then “Programs”
- Create a new folder and paste the shortcut inside.



Problems related to data preparation ...

- ◆ FLoSC does not run for some sample of data
- ◆ Difficulty getting any results out of FLoSC: the system freezes
- ◆ Does FLoSC cope with multiple separate episodes of RC and NC?

... Problems related to data preparation ...

- ◆ FLoSC does not run for some sample of data
- ◆ Difficulty getting any results out of FLoSC: the system freezes

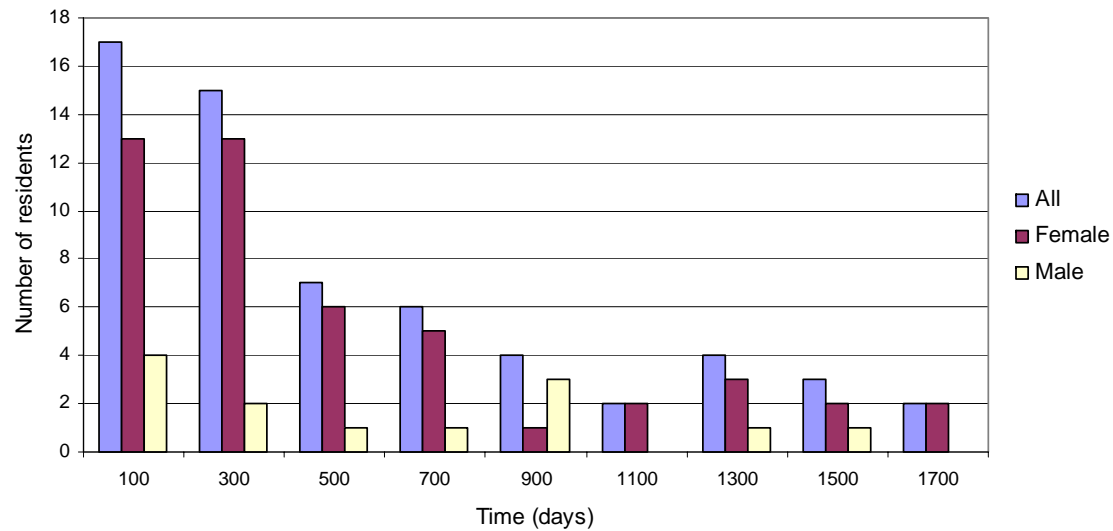
- Having data in the format expected by FLoSC is the biggest challenge
 - Program crash
 - Inaccurate results

- Examples of data issues
 - Plots of LOS distribution (e.g. “Hump” in LOS distribution)
 - Missing data related to residents’ pathway
 - Number of records
 - Coding of input data

... Problems related to data preparation ...

- ◆ Example of data issue: “hump” in LOS distribution (1/2)
- LOS for residents permanently admitted in LTC is usually declining
 - The longer the LOS, the fewer the residents become

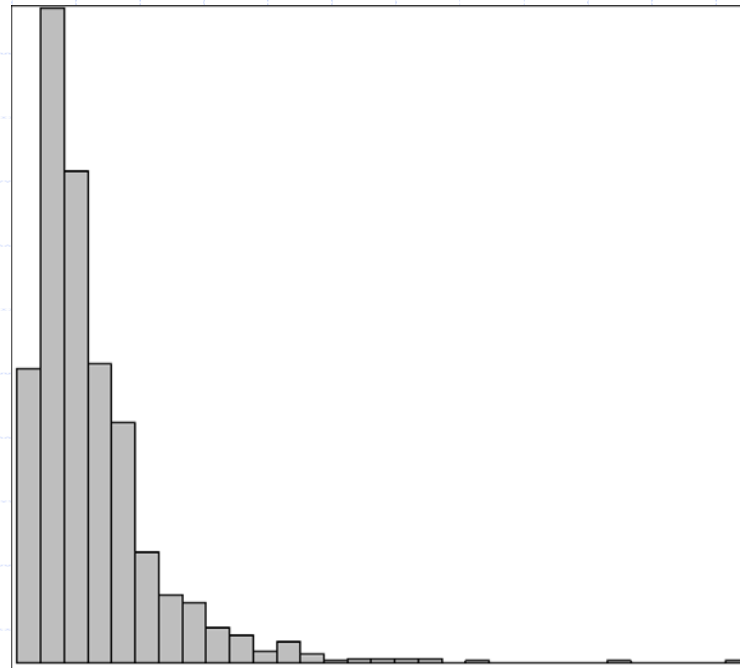
LOS in residential care



Input data

... Problems related to data preparation ...

- ◆ Example of data issue: “hump” in LOS distribution (2/2)
 - Due to a badly prepared (or wrong) data, a “hump” appears in the LOS distribution
 - FLoSC cannot handle with this type of data



... Problems related to data preparation

- ◆ Does FLoSC cope with multiple separate episodes of RC and NC?
 - FLoSC models the system by type of care rather than homes providing the care
 - FLoSC handles length of spells, and not of episodes
 - ◆ A spell is made of several episodes
 - ◆ An episode is a period of care at a particular home
 - The episodes have to be integrated into a single spell for each type of care
- ◆ The considered resident pathway depends on the gap between successive episodes
 - Changes between different RC (or NC) settings are permitted
 - In practice, the residents can be discharged from and readmitted to the same home several times
 - These movements may not be related to the resident's treatment
 - The gap between successive episodes impacts on the spell to be considered

Possible applications/extensions...

- ◆ Could the model be applied to a younger population (18 to less than 65 years of age) in long-term care?
- ◆ Could the tool be used to a younger people (physical disability/ sensory impairment) where the decline rates are different to older people?
- ◆ Could a similar model be developed for children's social care?
- ◆ Is it possible to activate additional covariates such as "age at admission"?

...Possible applications/extension...

- ◆ Could the model be applied to a younger population in long-term care?
 - 18 to less than 65 years of age, with physical disability/ sensory impairment
 - The decline rates are different to older people
- ◆ Could a similar model be developed for children's social care?
- FLoSC can be used to capture the residents' stay in one type of care
- FLoSC is able to adapt the characteristics of the local population, if:
 - The system's behaviour looks like that of Long-Term system (i.e. an exponential LOS distribution)
 - Data is available from a sufficient number of records
 - ◆ FLoSC uses historical observation from the data availability period to build a stochastic model on the pattern of movement of residents in LTC
- Further analysis are required to:
 - Capture the survival and movement patterns of the younger population within the system;
 - Model the cost development.

...Possible applications/extension

- ◆ Is it possible to activate additional covariates such as “age at admission”?
 - FLoSC does not take into account this additional covariate
 - The model has to be modified to include it