

FLoSC

Forecasting Length of Stay and Cost

- [Introduction](#)
- [Methods](#)
- [User Guide](#)
- [Tutorial](#)
- [Downloads](#)
- [Installation <<](#)
- [Links](#)
- [Contact](#)

FLoSC was developed using a combination of software tools. More specifically,

- graphical user interface (GUI) was implemented using VBA in Microsoft Office Excel™;
- model fitting and computation are done behind the scene in [R](#), a quality open-source software for statistical computing;
- communication between Excel and R is achieved by an Excel plug-in, [RExcel](#), also an open-source software.

Note: R is released under the [GNU General Public License \(GPL\)](#), which permits all and any use of the package. For further description, see [here](#).

The FLoSC installation program will install R, RExcel and all necessary R libraries automatically. In addition, the installation process will check whether all required Dynamic Link Library (DLL) as listed in the Downloads area are present in the operating system; if not, the missing DLLs will be installed and registered automatically.

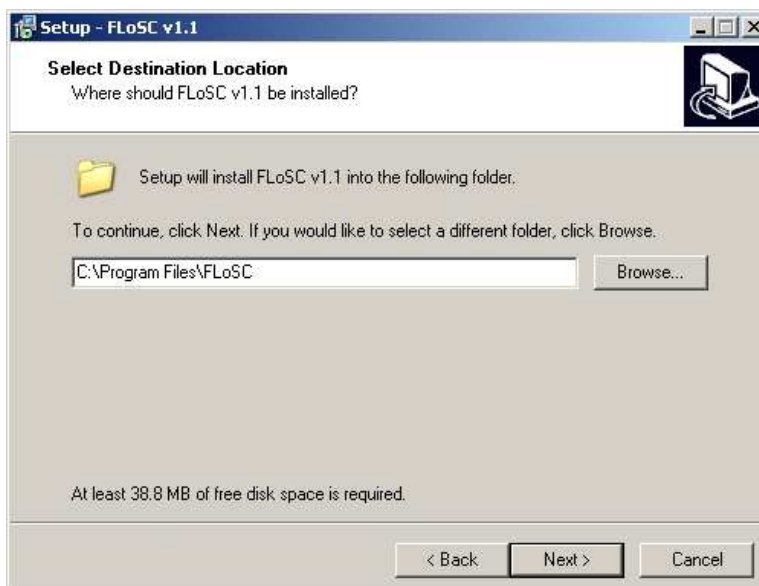
Installation

Note: computer account with Administrator's right is required for FLoSC installation.

Obtain the latest version of FLoSC from the [Downloads](#) area. Double-click on the downloaded file to start the installation process.



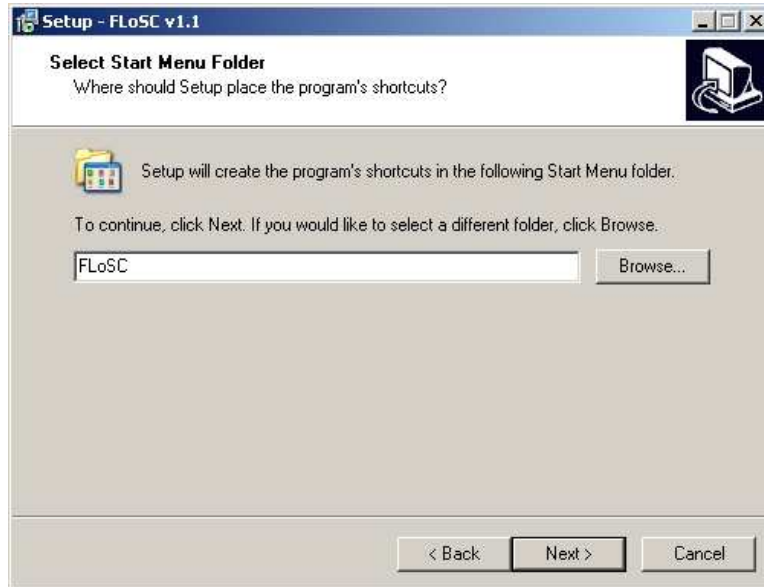
Click **Next** to continue.



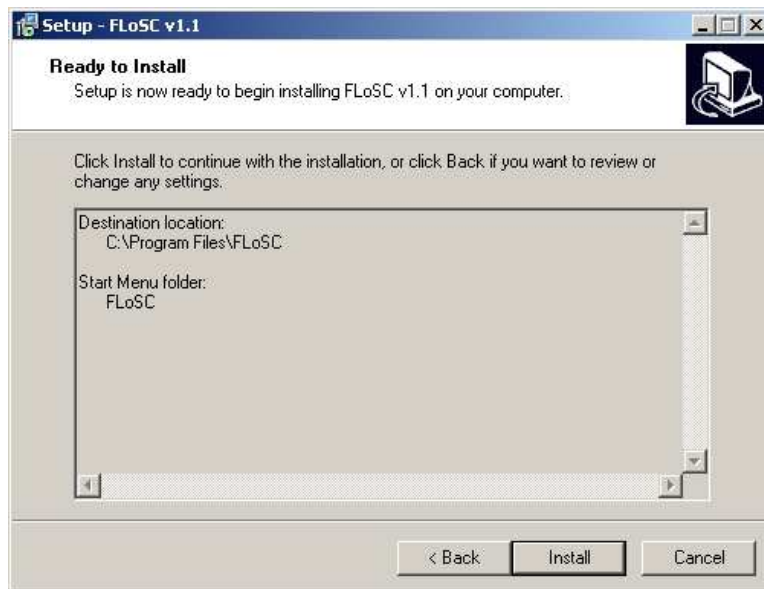
The default location FLoSC will be installed. If desired, a different folder can be specified. Click **Next** to continue.



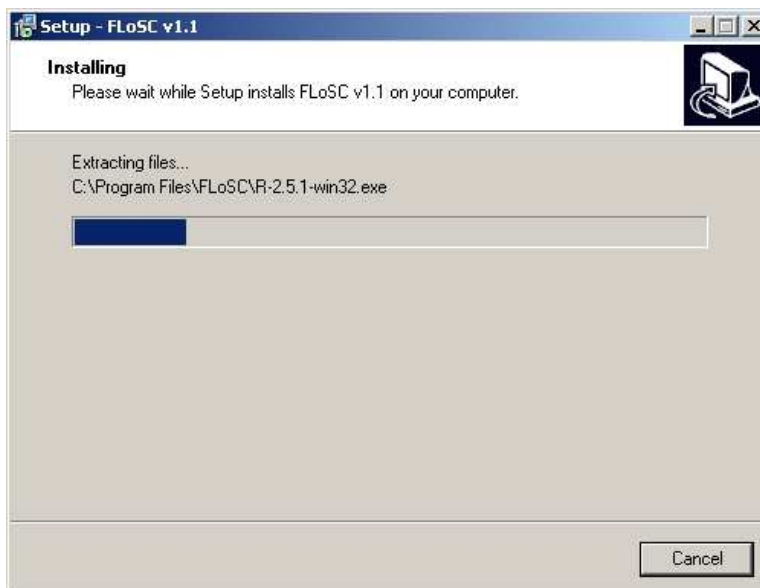
Click **Next** to continue.



Click **Next** to continue.



A final review of basic settings. Click **Next** to continue.



This process can be several minutes depending on the speed of the computer.



Click **Finish** to complete the installation.

If the default options were not changed during the installation, FLoSC toolkit will create a Start Menu group.



In addition, a Start Menu group for R and RExcel will be created, such as shown in the following.

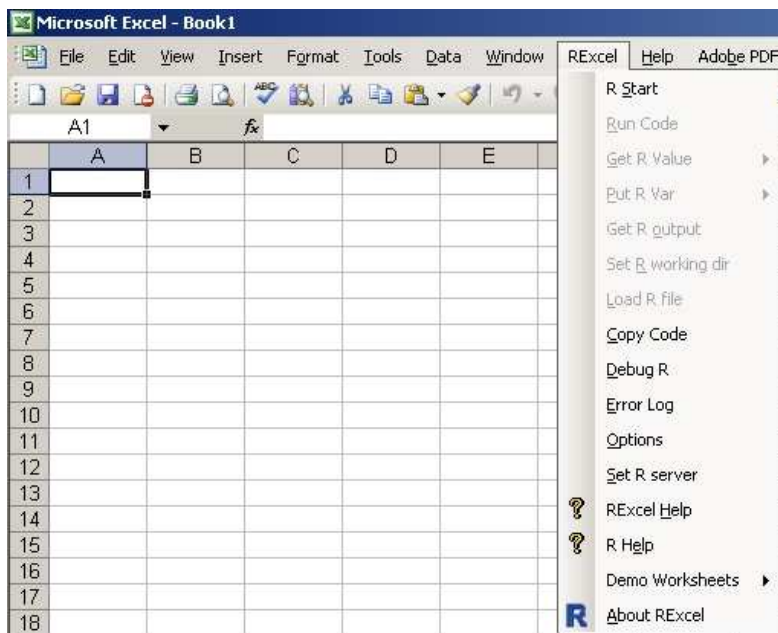


A desktop icon for R will be created, although if desired, the icon can be safely deleted.



Furthermore, the installation of RExcel plug-in will create a menu group called "RExcel" in the Excel application (as shown in the following screenshot). This extra menu group will not interfere with user's normal use of Excel and should

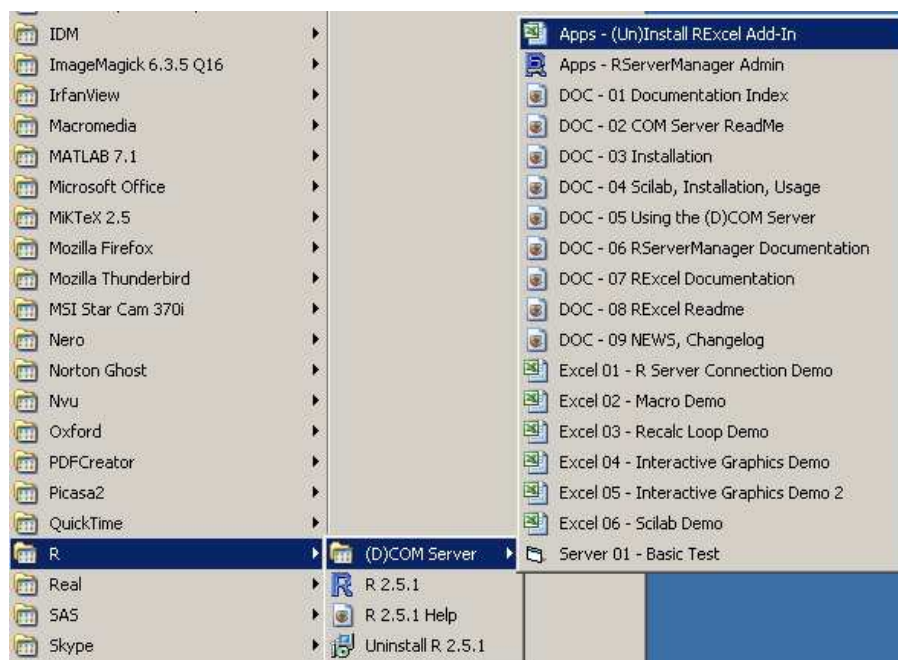
be left as it is.



Un-installation

To uninstall FLoSC, click on the Uninstall icon from the FLoSC menu group.

You will need to remove R and REExcel from your computer separately. Click on the icon as shown in the following



which will start the Excel application, and select uninstall REExcel plug-in. To uninstall R, click on the Uninstall icon and follow the on-screen instructions.



Once finished, you may want to delete the R menu group. If desired, you will need to manually delete the folder "C:\Program Files\R" to remove any remaining files.